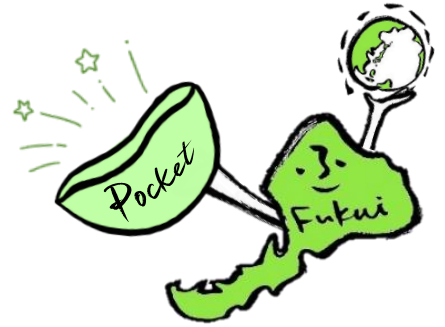


FIA Pocket

English December & January



Applications for Dec. 15th and later are half-price.

FIA Japanese Classes

Four class levels are available including elementary 1, 2, 3, and lower intermediate (JLPT N3 level).

| | 1 st Sunday | 2 nd Sunday | 3 rd Sunday | 4 th Sunday |
|------|------------------------|------------------------|------------------------|------------------------|
| Dec. | | 8 th | 15 th ※ | 22 nd |
| Jan. | | 12 th | 19 th | |
| Feb. | | 9 th | 16 th | |
| Mar. | 2 nd | 9 th | | |

Time: Both 1pm classes and 2:45pm classes available

Where: Study Room 1・2, 2nd Floor, Fukui International Activities Plaza

Course Fee: 4,000 yen

*2000 yen if you join on or after December 15th.

■ Please apply at the Fukui International Activities Plaza.



Fukui International Activities Plaza 1F hallway exhibition

December 1st to December 14th

Die Macht der Musik Power of Music



A cultural activity exhibition of the Bando P.O.W. (prisoner of war) Camp

100 years have passed since Beethoven's Ninth Symphony was first performed in Japan. This panel exhibition will commemorate that first performance.

Hosted by Fukui Japan-German Friendship Association

December 7th to December 14th

World Expo International Exchange Program

Fukui Prefectural University Students' Brazil Visit – Panel Exhibit



Learn about Fukui Prefectural University students' experiences promoting Fukui Prefecture and their exchange with Colônia Pinhal (Brazil's Fukui Village) in September.

Hosted by Fukui Prefecture/Fukui Prefectural University

Fukui International Activities Plaza
Fukui International Association Reinan Center

Year End & New Year Holiday Closings

Sunday, December 29th to Friday, January 3rd

However, lending from the Fukui International Activities Plaza and the Passport Office (where Japanese citizens make their passports) will be closed from December 28th (Sat) to January 4th (Sat).

*A note about passports:

We will not be taking applications on January 5th (Sun).

We will only be issuing passports for those who have already applied.

We will take new applications starting January 6th (Mon).



Enjoy activities like cooking, a concert, and games!

Christmas Party



Date: Saturday, December 21st
17:30pm ~ (17:00pm open)



Place: Edomekami Community Center
(4-8 Edomekami-Yamato, Harue-cho, Sakai city)

Participation fee: 500 yen

▼ Please apply by December 13th.

Sakai International Society (SIS)

TEL 0776-50-3850

Email sakaishikokusai@gmail.com





**As of October 5th, 2024,
Fukui Prefecture's minimum wage has been
raised to 984 yen per hour.**

If you think you are being paid under minimum wage,
consult with your nearest Labor Bureau or Labor Standards
Inspection Office.


Fukui Prefecture's recommended Instagrammable spot!



Tsuruga Port Illumination Miraie
(to the future)

Kanegasaki-cho, Tsuruga City, Fukui Prefecture

The port will be lit up in December 2024
until the 25th (Wed) from 6:00pm~ 9:00pm

For recommended tourist spots,
please check out "fuku-e.com". 



**From November 1st, 2024,
it is now illegal to use your
smartphone while riding a bicycle.**



If you use your phone while cycling,
you will be penalized. Also, if you ride a bicycle while under the
influence of alcohol, or provide alcohol to someone cycling, you
will be penalized.
Keep others safe – ride responsibly and obey the law.

FIA sponsored **Free Consultation for Foreigners** (Reservation Required)

You can receive consultation on a wide variety of issues including residence
status, family immigration, naturalization, legal issues, labor issues, marriage,
accidents, debt, and DV.

Free Consultations Flyer
Consultation Center YouTube



Fukui Consultation Center for Foreign Residents

(Fukui International Activities Plaza TEL 0776-88-0062)

■ Immigration and Residency Consultation

Saturday, December 7th and January 11th, 1:00 pm ~ 4:00 pm

■ Legal Consultation

Saturday, December 21st and January 18th, 1:00 pm ~ 4:00 pm

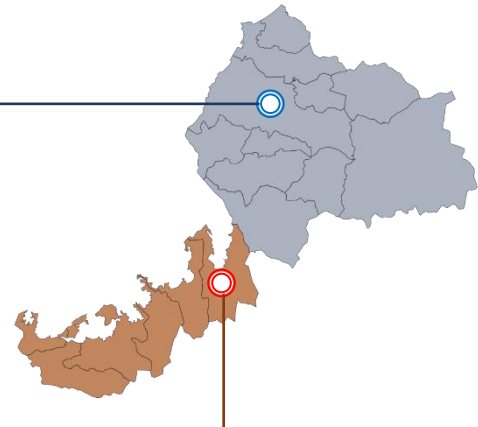
■ Remote Legal Consultation

Saturday, December 28th and January 25th, 1:00 pm ~ 4:00 pm

■ Life learning Center (You-I Fukui) sponsored

DV Consultation Service

Every Thursday, 9:00 am ~ 5:00 pm



Fukui Reinan Consultation Center for Foreign Residents

(Fukui International Association Reinan Center TEL 0770-21-3455)

Please inquire at this center if you live in the Reinan area.

Fukui International Association

Fukui International Activities Plaza

〒910-0004 3-1-1 Hoei, Fukui City
TEL 0776-28-8800 FAX 0776-28-8818 Email info@f-i-a.or.jp

Fukui International Association Reinan Center

〒914-0063 The 2nd floor of AQUATOM, 2-2-4 Kagura-cho, Tsuruga City
TEL 0770-21-3455 FAX 0770-21-3441 Email reinan@f-i-a.or.jp

